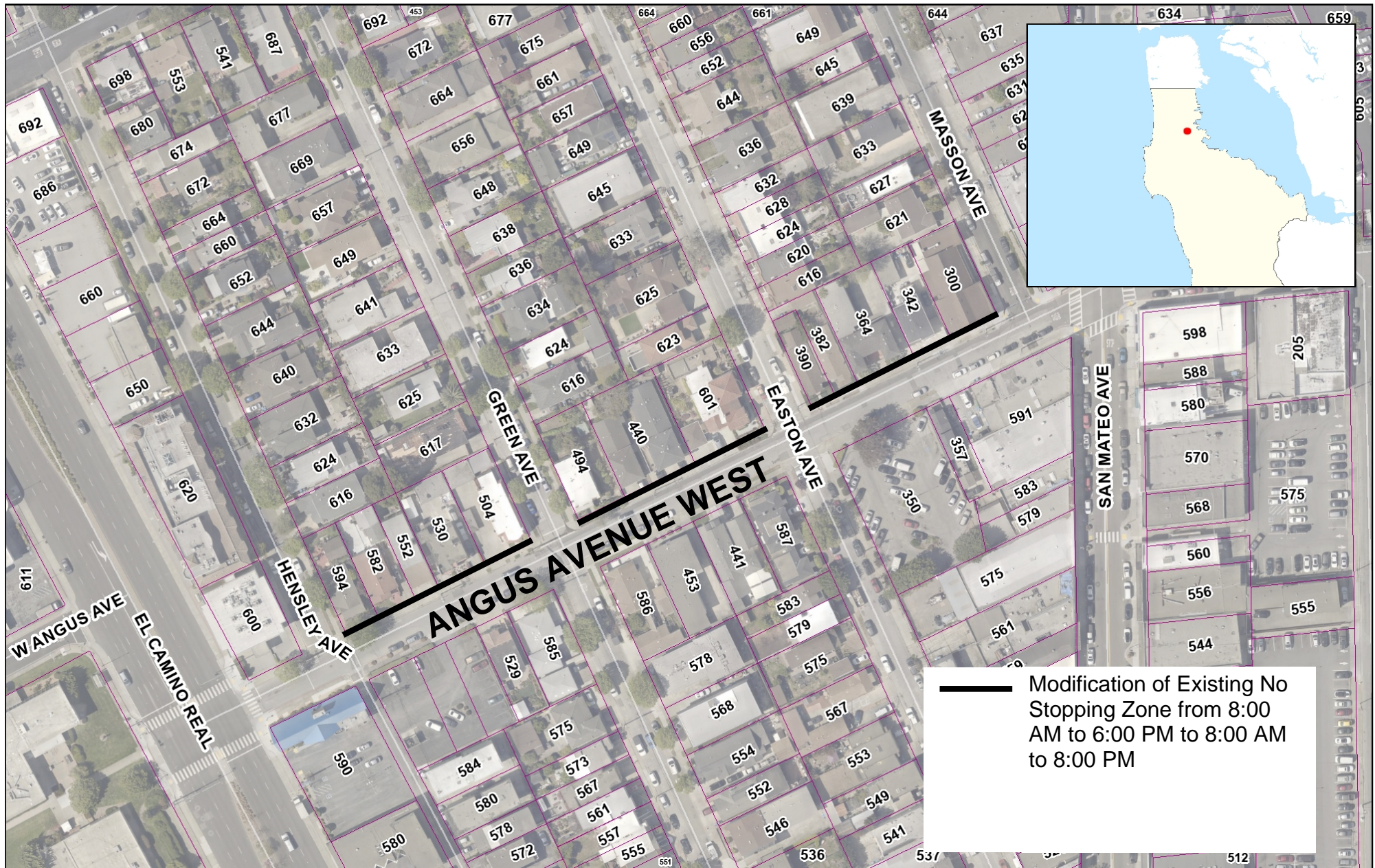


# Exhibit B: Map of Proposed Parking Restrictions on Angus Avenue West



— Modification of Existing No Stopping Zone from 8:00 AM to 6:00 PM to 8:00 AM to 8:00 PM

0.06 0 0.03 0.06 Miles

WGS\_1984\_Web\_Mercator\_Auxiliary\_Sphere  
© Latitude Geographics Group Ltd.

1:1,925



This map is a user generated static output from an Internet mapping site and is for reference only. Data layers that appear on this map may or may not be accurate, current, or otherwise reliable.

THIS MAP IS NOT TO BE USED FOR NAVIGATION